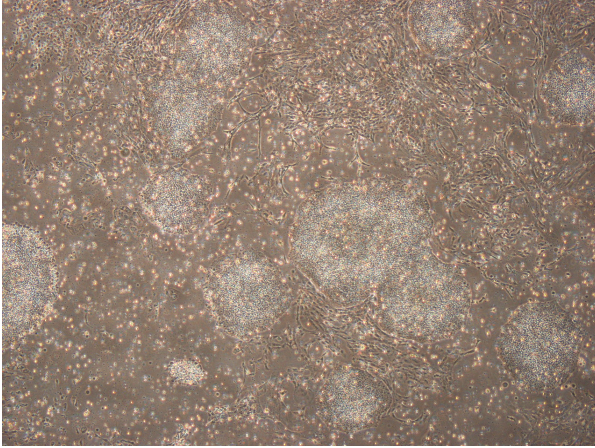
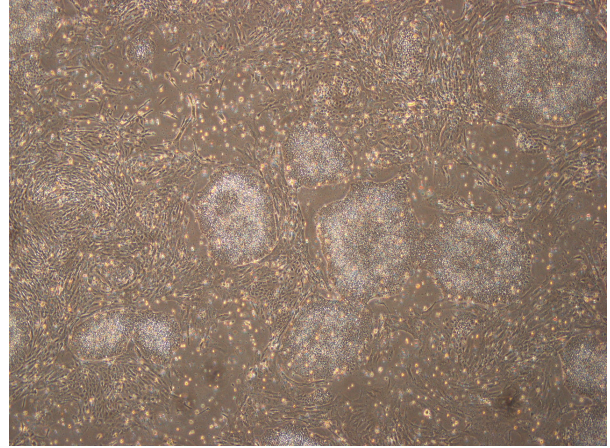


【 cira-jk-0001 】 Morphology of iPSC colonies

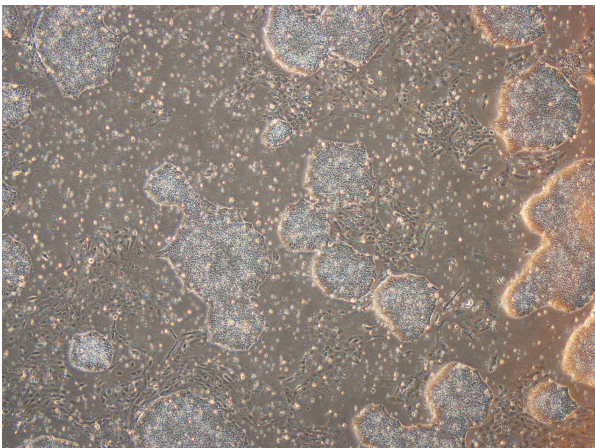
cira-jk-0001-A: passage-2



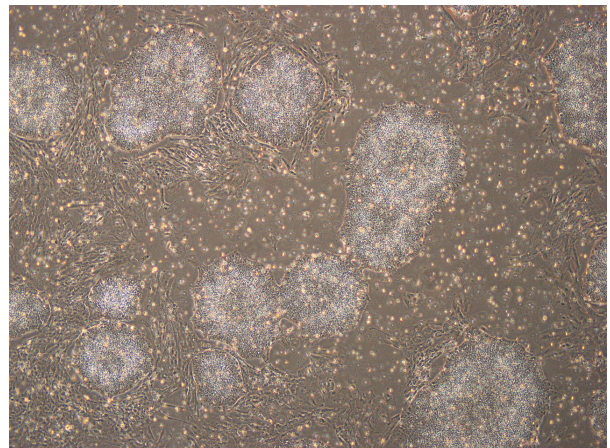
cira-jk-0001-B: passage-2



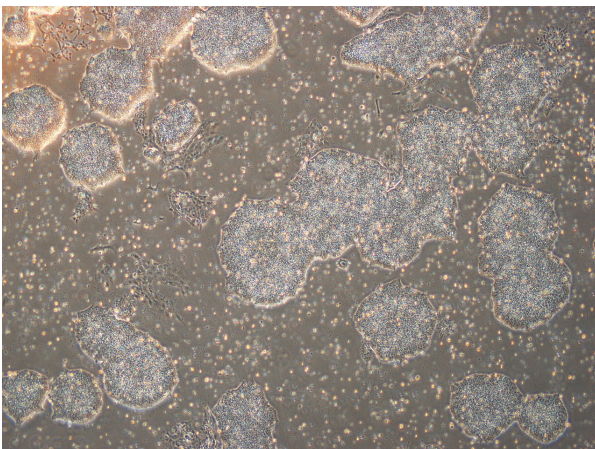
cira-jk-0001-C: passage-2



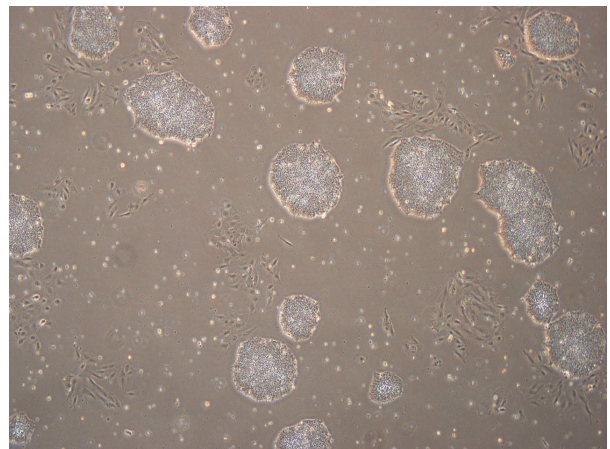
cira-jk-0001-D: passage-2



cira-jk-0001-E: passage-2



cira-jk-0001-F: passage-2



(All images were captured at 4x magnification)